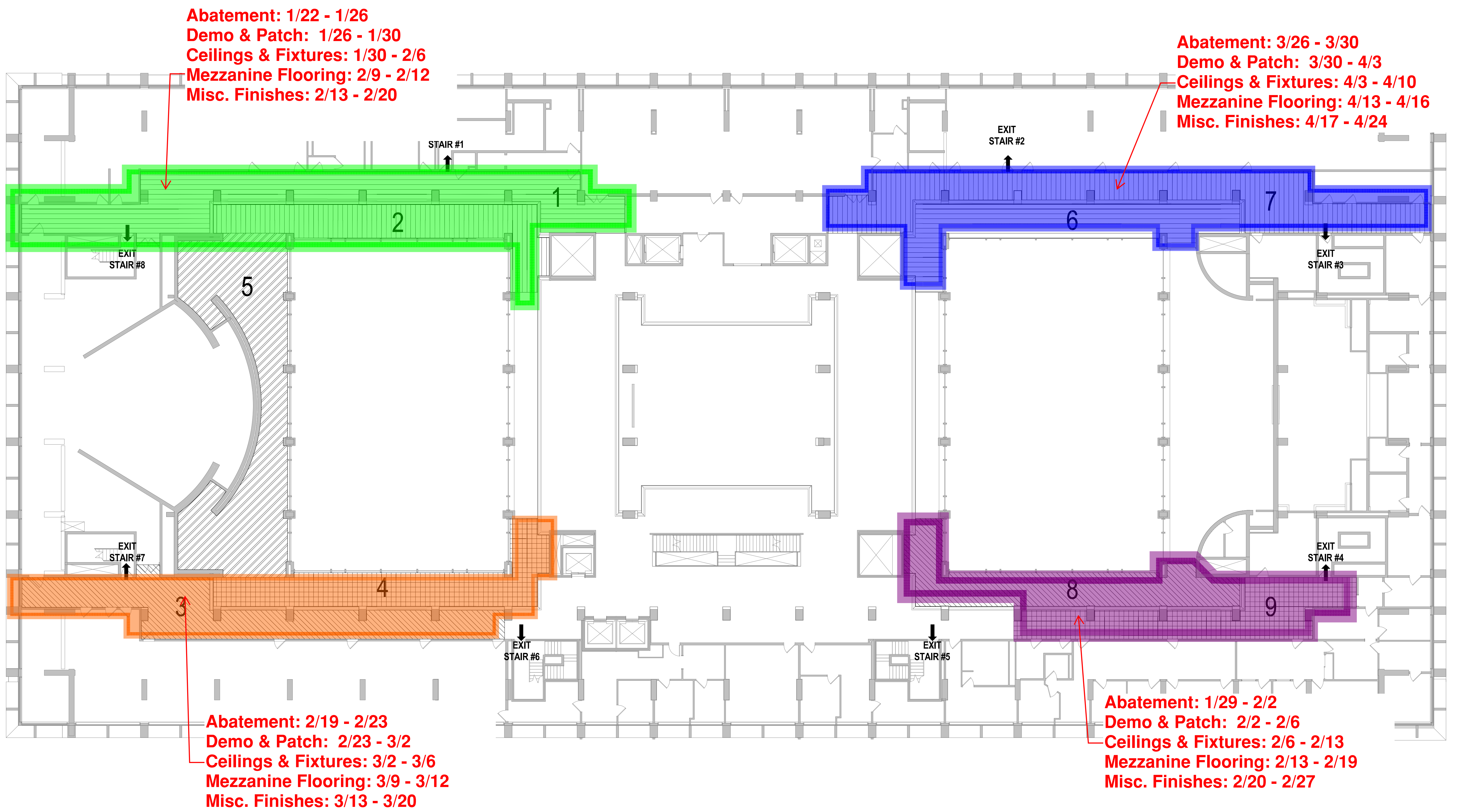




Jefferson Alumni Hall Renovations Update

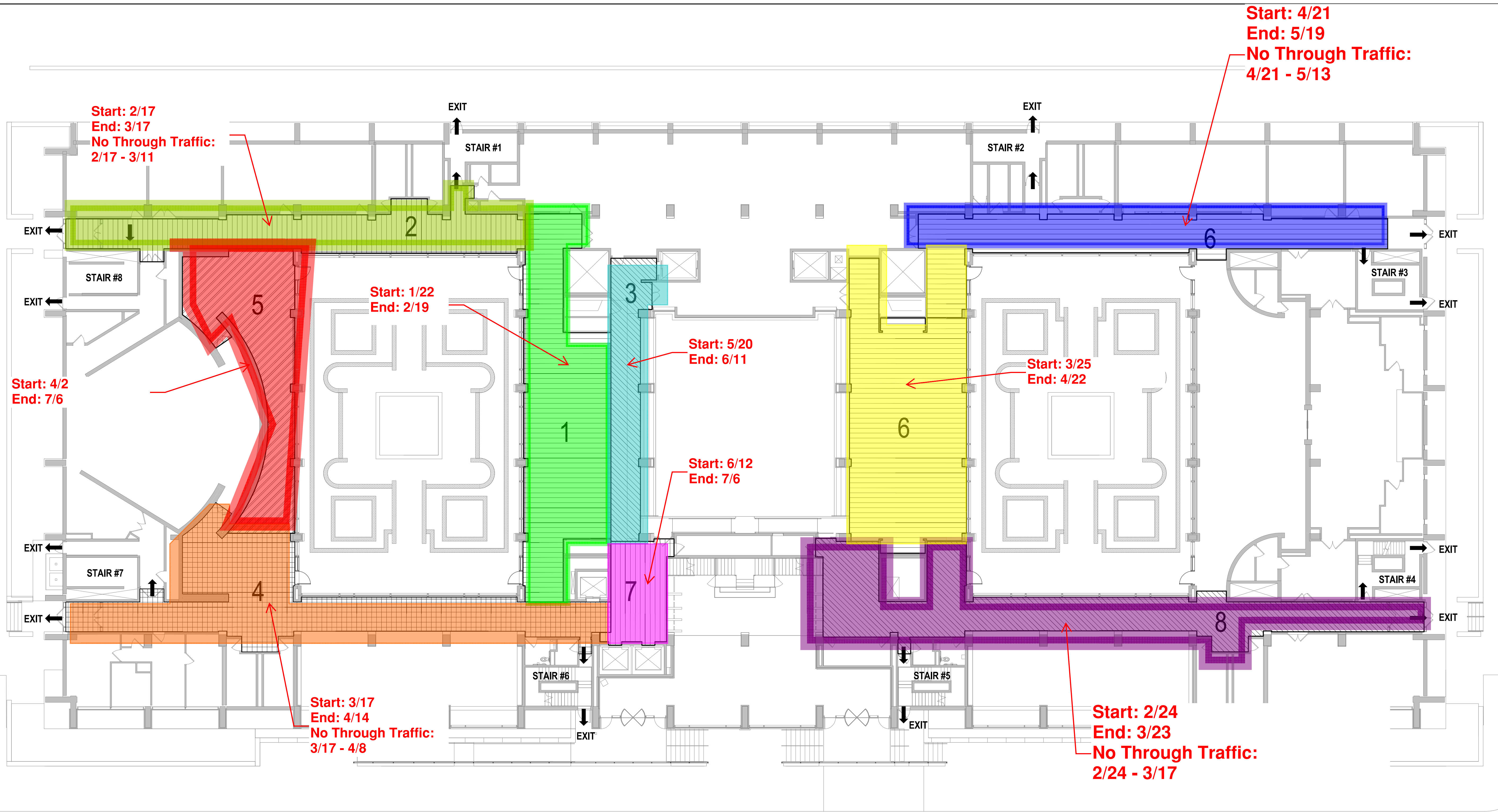
Week of Jan. 19, 2015

	Contractor	Area of Work	Dates	Description of Work	Impact
Current	SimplexGrinnell Superintendent John Burn	Entire Building connection of new Fire alarm system	Complete Late-Jan. 2015	Old Fire Alarm devices will be removed.	Contractor will be removing old fire alarm devices from corridors, offices, and labs.
	P. Agnes, Inc. Superintendent, Charlie Morgan	Escalator Demolition and new stair Construction	Complete March 2015	Escalators will be demolition completed Jan. 3rd. New stairs construction starts Jan. 5th will steel installation.	Occupants will have to use new and modernized elevators and existing fire stairs. Major noise and vibration.
	P. Agnes, Inc. Superintendent, Charlie Morgan	Modernization of Exist. Passenger Elev.	Complete Jan. 2015	The existing passenger elevator will be modernized; therefore it will be out of services	Two new elevators will be functioning for use. Intermittent loud noise and vibration.
	TJU Project Shop Project Manager Ryck Guyre	Public corridors floors, 3, 4, & 5	Ongoing	Old suspended ceilings in the corridors are being replaced with new ceilings.	Intermittent dust, noise, and reduced passage way in public corridors.
	Canuso Jordan Superintendent, John McKeown	East & West Locust Lounges	Dec. 2014 to June 2015	Construction of two Lounges on the Locust street side of building aligned with the atriums	Intermittent loud noise and drilling. Partial blockage of sidewalks at JAH on Locust St.
	Delta BJDS Superintendent, Damian Lavelle	1st Fl & Mezz Asbestos Remediation	Jan. 2015 to July 2016	Remediation of Acoustical Asbestos Ceiling, plaster ceiling, and support system, remediation of VAT	Areas will be cordoned-off and made inaccessible for a weekend so asbestos can be remediated. See the attached plans for dates.
P. Agnes, Inc. Superintendent, TBD	1st Fl & Mezz Finishes	Jan. 2015 to July 2016	Replacement of brick flooring with terrazzo, plaster ceilings with suspended acoustical & painting walls.	Most of this work will be performed during out of work hours; however, occupants will be walking through work areas and must take caution.	
Future	TBD	Eakins Lounge Renovation	TBD	Construction of two Lounges on the Locust street side of building aligned with the atriums	Intermittent loud noise and drilling.



2

MEZZANINE PHASING PLAN



1

1st FLOOR PHASING PLAN

3/64" = 1'-0"



Since 1918 • Building Contractors • Construction Managers

TJU - JAH Entrance & Elevators
PAI Job # 12613

THREE WEEK LOOK AHEAD SCHEDULE

Scope of Work	Contractor	Week of: January 12 through January 16					January 19 through January 23					January 26 through January 30				
		12	13	14	15	16	19	20	21	22	23	26	27	28	29	30
		Su					Sa					Sa				Sa
Basement - Gym																
Punchlist	Misc.															
West Exterior																
Punchlist	Misc.															
West Lobby																
Punchlist	Misc.															
Escalator Removal																
Steel Installation for Stairs	Berlin															
Existing Elevator																
Modernization	Otis															
Machine Room & Pit MEP Trades & API																
Inspection																
Anticipated Milestone Dates																
Stair Installation		1/5/15 - 2/27/15														
P. Agnes, Inc. 2101 Penrose Avenue Philadelphia, PA 19145							Thomas Jefferson University Philadelphia, PA					Date of Issuance: 1/13/15				

No.	Contractor	Job Description	Day of the Week														Week of Month		Remarks
			M 1/19	T	W	T	F	S	S	M 1/26	T	W	T	F	S	S	3rd Wk 2/2	4th Wk 2/9	
1		EAST SIDE																	
3	Cippco	Demo masonry walls																	
4	Dzwil	Excavate for grade beam																	
5	Dzwil	Drill holes for rebar																	
6	Dzwil	Install rebar																	
7	Dzwil	Frame for slab and heating chase																	
8	Dzwil	Pour concrete for grade beam																	
10	CanusoJorden	Rock interior soffits																	
11	CanusoJorden	Frame soffit/rock ceiling @ stroe front																	
12	Cippco	Demo storefront window wall																	
	CanusoJorden	Install insulation on temp wood wall																	
13	CanusoJorden	Build temp wood wall																	
14	Chadwick	Install temp heat piping																	
15	Chadwick	Tie-in temp heating pipes @ storefront wall																	
	Chadwick	Install VAV																	
16	Chadwick	Demo finned tube radiation																	
17																			
18		WEST SIDE																	
20	Cippco	Demo masonry walls																	
23	Dzwil	Frame for slab and heating chase																	
24	Dzwil	Pour concrete for grade beam																	
25	CanusoJorden	Frame interior soffits																	
	CanusoJorden	Install insulation on temp wood wall																	
26	CanusoJorden	Rock interior soffits																	
27	CanusoJorden	Frame soffit/rock ceiling @ stroe front																	
28	Cippco	Demo storefront window wall																	
29	Chadwick	Install temp heat piping																	